



JLEN



JLEN Environmental Assets Group Limited Factsheet – 30 June 2021



Wind



Anaerobic
digestion



Solar



Waste &
bioenergy



Hydro



Low carbon
& energy
efficiency

KEY STATISTICS

Ordinary Shares Issued
as at 30 June 2021

601.4m

Ordinary Share Price
as at 30 June 2021

99.9p

Market Capitalisation
as at 30 June 2021

£600.8m

Unaudited NAV per share
as at 30 June 2021

96.0p

Dividend per share
targeted for the year
ending 31 March 2022

6.80p

Past performance is not a guide to future performance. There is no guarantee that the target returns contained in this document will be achieved.

Investment portfolio

- JLEN invests in a diversified portfolio of environmental infrastructure projects
- It aims to provide investors with a sustainable, progressive dividend, paid quarterly, and to preserve the capital value of its portfolio over the long term on a real basis
- Environmental infrastructure is infrastructure assets projects and asset-backed businesses that utilise natural or waste resources or support more environmentally-friendly approaches to economic activity, support the transition to a low carbon economy or which mitigate the effects of climate change
- The current portfolio includes 39 onshore wind, PV solar, waste, waste water processing, hydro, anaerobic digestion, bioenergy, battery storage and low carbon refuelling projects in the UK and France

Investment policy

- JLEN's policy is to invest in environmental infrastructure projects that typically have one or more of the following characteristics:
 - long-term, predictable cash flows, which may be wholly or partially inflation-linked cash flows;
 - long-term contracts or stable and well-proven regulatory and legal frameworks; or
 - well-established technologies, and demonstrable operational performance
- No more than 25% of the net asset value will be attributable to projects in construction and not fully operational
- At least 50% of the portfolio by value will be based in the UK and no single project will represent more than 30% of the net asset value after acquisition

Investment attractions

- Investment in renewable energy projects is supported by a global commitment to the transition to a low carbon economy
- The markets in which JLEN operates continue to evolve as the build out of sustainable infrastructure takes on new forms. JLEN's broad investment policy allows it to continue building a resilient and diversified portfolio of assets that have a range of operating models that are not dependent on a single market or set of climatic conditions
- Potential upside to asset value comes from active management of the existing projects
- Strong commitment to ESG and sustainable investing with transparent monitoring and reporting
- Investment Adviser – Foresight Group is a leading infrastructure and private equity investment manager with a highly experienced global infrastructure team supported by an in-house asset management team

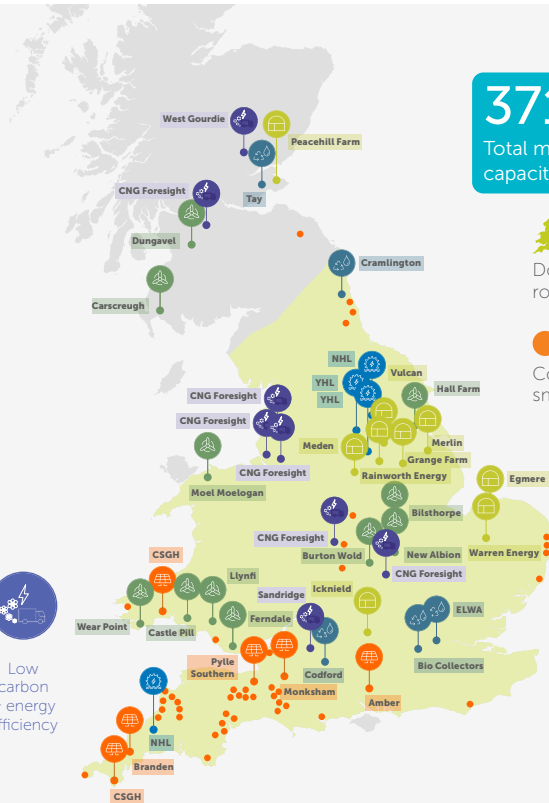
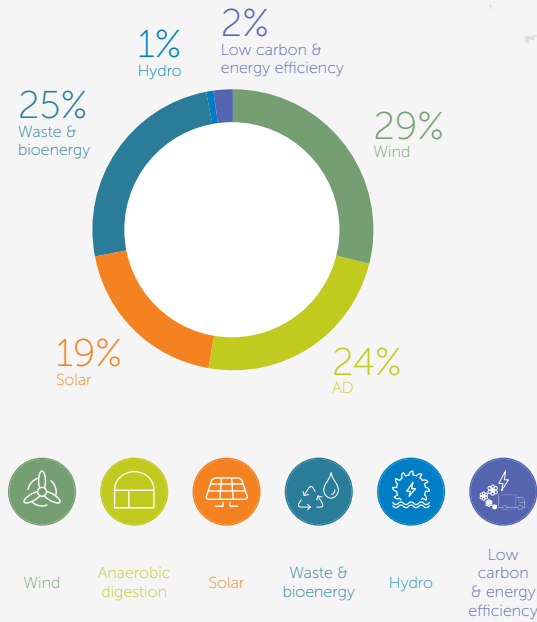


Energie Technologie Ambiente

www.jlen.com



Portfolio value split by sector⁽¹⁾



371.5
Total megawatt capacity

39
No of assets

Domestic rooftop solar
 Commercial small-scale solar



(1) Estimated 30 June 2021.

Acquisitions in the quarter to 30 June 2021

Sandridge Battery Storage

In May 2021, JLEN acquired a 50% equity stake in Sandridge Battery Storage Limited which holds the development rights to construct the Sandridge Battery Storage project, a 50MW lithium-ion battery energy storage plant based in Melksham in Wiltshire, UK. The Sandridge project is fully consented and construction ready. Negotiations on a fully wrapped EPC contract are being finalised. The project is expected to reach energisation and start commercial operations in October 2022.

Energie Technologie Ambiente

In May 2021, JLEN acquired a 45% equity stake in Energie Technologie Ambiente S.r.l. ("ETA"), a 16.8MW Energy from Waste power plant which processes refuse derived fuel, located in the municipality of Manfredonia in the Apulia region of southern Italy. The investment has been made alongside FEIP, which also acquired a 45% equity stake. ETA is owned by Marcegaglia Investments S.r.l. which will retain a 10% equity stake in the EfW plant.

Cramlington Biomass

In June 2021, JLEN acquired a 100% equity stake in Cramlington Renewable Energy Developments Ltd, which owns a Biomass Combined Heat and Power plant ("CHP Plant") and its underlying contracts.

The CHP Plant is located to the north west of the town of Cramlington in Northumberland and utilises proven technology to process a diversified biomass fuel mix, creating up to 28MW of electrical power and 8MW of heat for export via private wire to industrial customers and the grid.

Portfolio as estimated at 30 June 2021	Projects	MW capacity
Wind	13	169.0
AD	9	50.2
Solar	6	80.2
Waste and bioenergy	6	68.3
Hydro	2	3.8 ⁽¹⁾
Low carbon and energy efficiency	3	n/a
Total	39	371.5

(1) Includes co-located battery storage.



ENVIRONMENTAL, SOCIAL & GOVERNANCE

JLEN's portfolio is forecast to deliver, per year⁽¹⁾

>580,000

MWh electricity

And

>345,000

MWh biomethane

And avoid emissions of

>445,000

tCO₂e avoided

Equivalent to

>200,000

cars off the road

(1) Forecasts are not a reliable indicator of future performance.

ESG objectives

Promote the efficient use of resources

To invest into projects that manage the availability of natural resources, whether through utilisation of renewable resources, increasing resource or energy efficiency, or reusing or recovering waste.

Develop positive relationships with the communities in which JLEN works

To encourage positive relationship-building between portfolio assets and the communities in which they sit.

Ensure effective, ethical governance across the portfolio

To manage portfolio assets in a way that promotes ethical, effective governance.

Environmental performance 2020/21



>970,000

MWh energy generated



>445,000

GHG emissions avoided (tCO₂e)



>37.5

wastewater treated (billion litres)



>500,000

waste diverted from landfill (tonnes)



>140,000

waste recycled (tonnes)



>370,000

organic fertiliser produced (tonnes)

Social performance 2020/21



>£380,000

community funding

Governance performance 2020/21



35

health and safety audits



JLEN

JLEN Environmental Assets Group Limited
Factsheet – 30 June 2021

About Foresight Group

Foresight Group was founded in 1984 and is a leading infrastructure and private equity investment manager. With a long-established focus on ESG and sustainability-led strategies, it aims to provide attractive returns to its institutional and private investors from hard-to-access private markets. Foresight Group manages over 300 infrastructure assets with a focus on solar and onshore wind assets, bioenergy and waste, as well as renewable energy enabling projects, energy efficiency management solutions, social and core infrastructure projects and sustainable forestry assets. Its private equity team manages five regionally focused investment funds across the UK, supporting over 100 SMEs. Foresight Group operates from 12 offices across six countries in Europe and Australia with AUM of £7.8 billion as at 30 June 2021. Foresight Group Holdings Limited listed on the Main Market of the London Stock Exchange in February 2021. <https://www.fsg-investors.com/>

Company information

Registered address

Sarnia House, Le Truchot St Peter Port,
Guernsey GY1 4NA

Listing	London Stock Exchange
SEDOL	BJL5FH8
Ticker	JLEN
Financial Year End	31 March
Dividend Payments	June, September, December & March

Board members

Richard Morse
Chairman
Richard Ramsay
Senior Independent Director
Alan Bates
Director
Stephanie Coxon
Director
Jo Harrison
Director
Hans Joern Rieks
Director
Peter Neville
Director

Investment Adviser

Foresight Group LLP
The Shard
32 London Bridge Street
London SE1 9SG
Foresight Group LLP is regulated and authorised by the Financial Conduct Authority
Contact:
Chris Tanner/Chris Holmes
Co-lead Investment Advisers
Email: institutionalIR@ForesightGroup.eu
Phone: 020 3667 8100

Corporate Broker: Winterflood Securities

Cannon Bridge House, 25 Dowgate Hill,
London EC4R 2GA
Contact:
Neil Langford
020 3100 0000

Registrar: Capita SAS

34 Beckenham Road, Beckenham,
Kent, BR3 4TU
Contact:
Shareholder enquiries
0871 664 0300

Fund Administrator: Praxis Fund Services Limited

PO Box 296, Sarnia House, Le Truchot,
St Peter Port, Guernsey GY1 4NA
Contact:
Matt Falla
01481 737600

Important notice

The Company currently conducts its affairs so that the shares issued by JLEN Environmental Assets Group Limited can be recommended by IFAs to ordinary retail investors in accordance with the FCA's rules in relation to non-mainstream pooled investments and intends to continue to do so for the foreseeable future. This document has been issued and approved by Foresight Group LLP. This document is intended for information purposes only and does not create any legally binding obligations on the part of Foresight Group LLP. Without limitation, this document does not constitute an offer, an invitation to offer or a recommendation to enter into any transaction. The information contained in this document is based on material we believe to be reliable. However, we do not represent that it is accurate, current, complete or error free. Assumptions, estimates and opinions contained in this document constitute our judgement as of the date of the document and are subject to change without notice. Past performance is not a guarantee of future results. The value of investments can go down as well as up and you may not get back any or all of the original amount invested. The distribution of this document and availability of this product in certain jurisdictions may be restricted by law. You may not distribute this document, in whole or in part, without our prior express written permission.